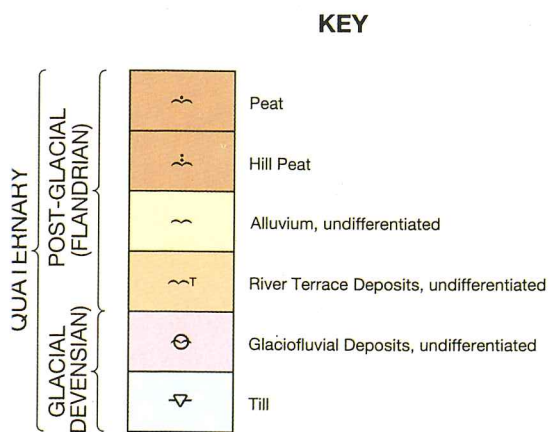
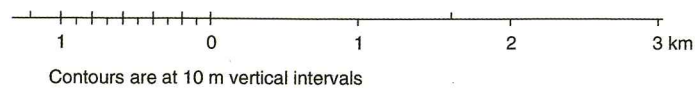


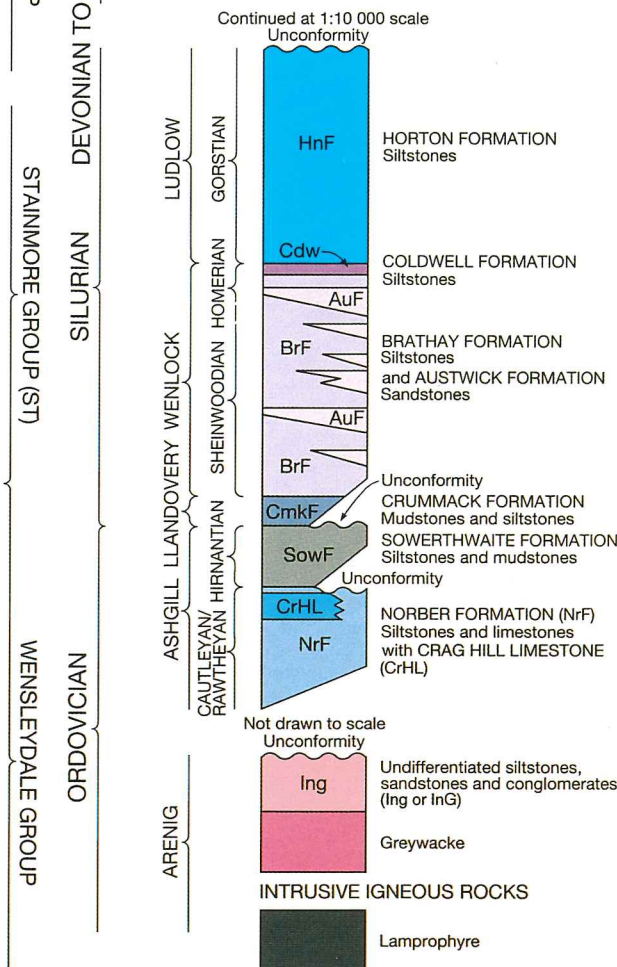
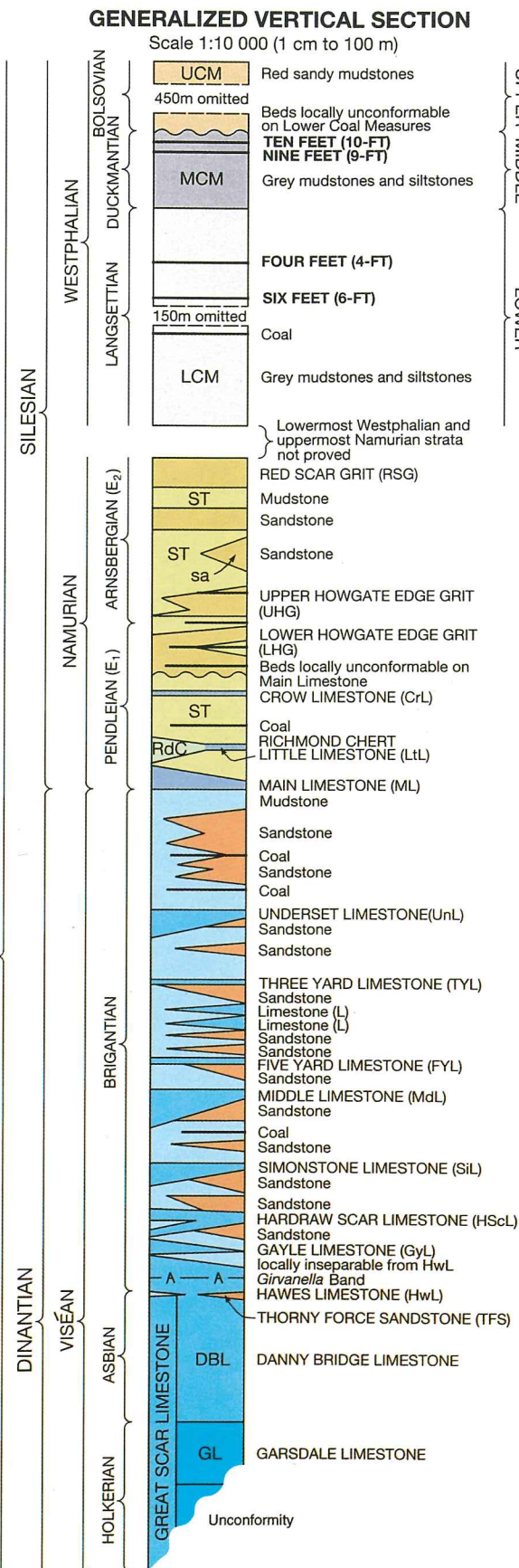
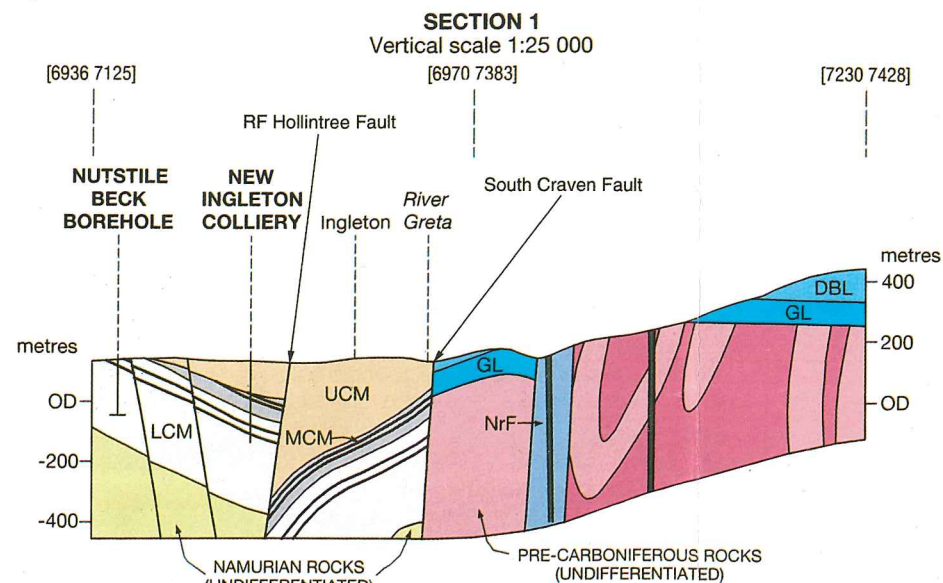
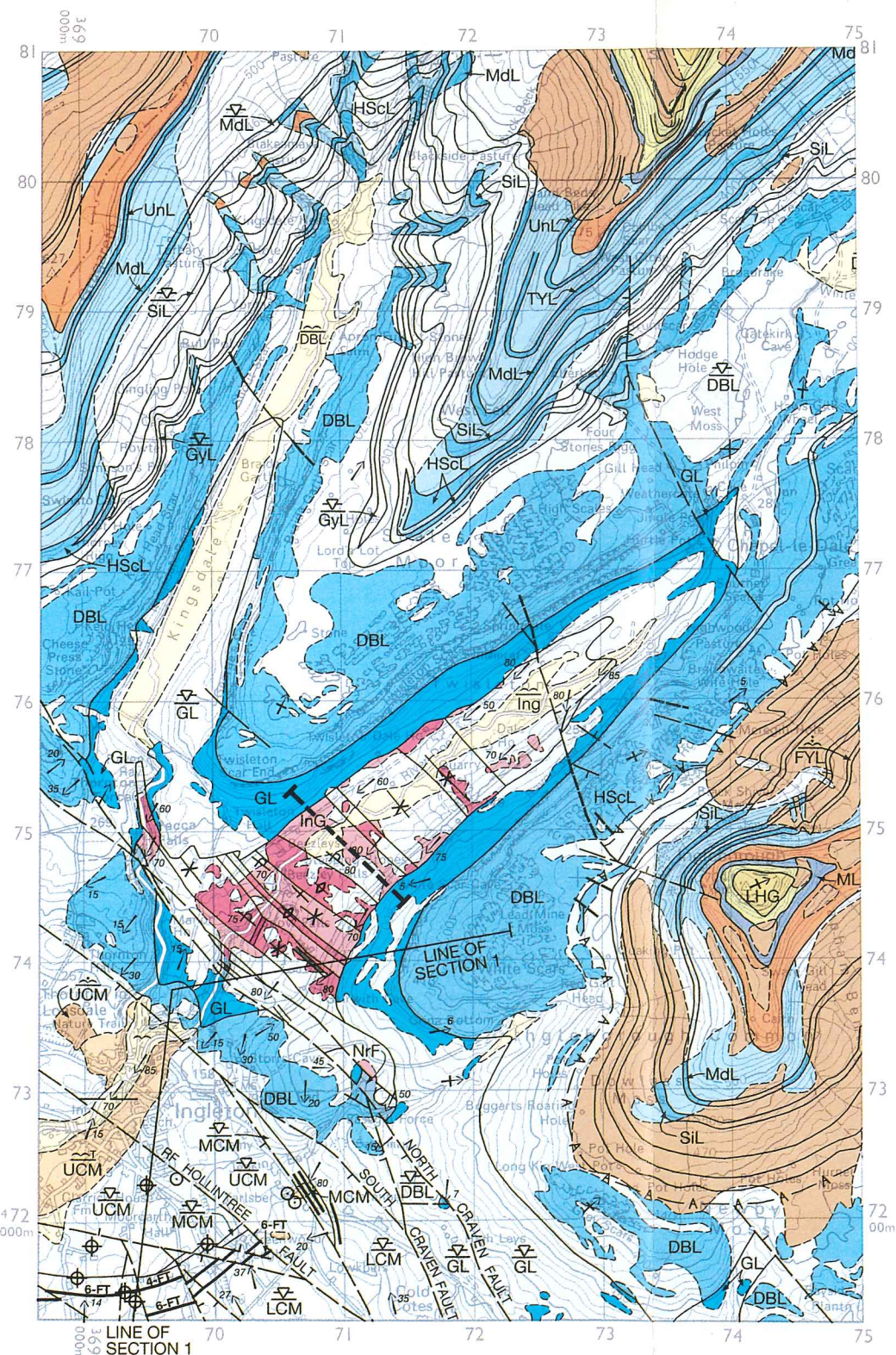
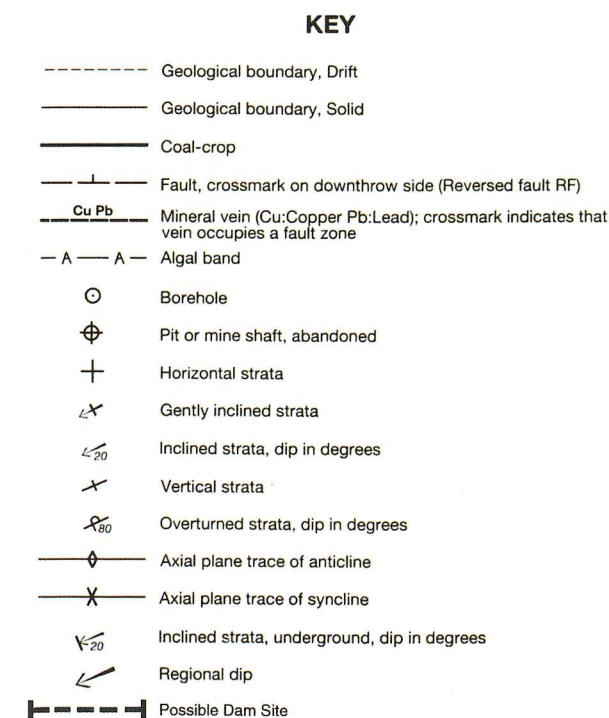
**WELSH JOINT EDUCATION COMMITTEE**  
**454/01-A**  
**ADVANCED GEOLOGY GL4**  
**JUNE 2003**  
**Extract from HAWES**  
**Solid and Drift**  
**1:50 000**



See also Generalized Vertical Section

Head, Landslips and Made Ground are not indicated on this map.  
The Drift deposits listed above are not necessarily in order of superposition.

Symbol indicates the Quaternary deposit at surface and the Solid formation at rockhead; other Quaternary deposits may intervene.



Reproduced by permission  
of the Director,  
British Geological Survey  
© NERC.  
All rights reserved